

**BTG2 Antibody (N-term)**  
**Affinity Purified Rabbit Polyclonal Antibody (Pab)**  
**Catalog # AP10121a****Specification**

---

**BTG2 Antibody (N-term) - Product Information**

Application	WB, IHC-P,E
Primary Accession	<a href="#">P78543</a>
Other Accession	<a href="#">NP_006754.1</a>
Reactivity	Human
Host	Rabbit
Clonality	Polyclonal
Isotype	Rabbit IgG
Antigen Region	33-61

**BTG2 Antibody (N-term) - Additional Information****Gene ID** 7832**Other Names**

Protein BTG2, BTG family member 2, NGF-inducible anti-proliferative protein PC3, BTG2, PC3

**Target/Specificity**

This BTG2 antibody is generated from rabbits immunized with a KLH conjugated synthetic peptide between 33-61 amino acids from the N-terminal region of human BTG2.

**Dilution**

WB~~1:1000

IHC-P~~1:50~100

E~~Use at an assay dependent concentration.

**Format**

Purified polyclonal antibody supplied in PBS with 0.09% (W/V) sodium azide. This antibody is purified through a protein A column, followed by peptide affinity purification.

**Storage**

Maintain refrigerated at 2-8°C for up to 2 weeks. For long term storage store at -20°C in small aliquots to prevent freeze-thaw cycles.

**Precautions**

BTG2 Antibody (N-term) is for research use only and not for use in diagnostic or therapeutic procedures.

**BTG2 Antibody (N-term) - Protein Information****Name** BTG2**Synonyms** PC3

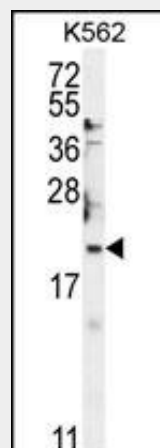
**Function** Anti-proliferative protein; the function is mediated by association with deadenylase subunits of the CCR4-NOT complex. Activates mRNA deadenylation in a CNOT6 and CNOT7-dependent manner. In vitro can inhibit deadenylase activity of CNOT7 and CNOT8. Involved in cell cycle regulation. Could be involved in the growth arrest and differentiation of the neuronal precursors (By similarity). Modulates transcription regulation mediated by ESR1. Involved in mitochondrial depolarization and neurite outgrowth.

### BTG2 Antibody (N-term) - Protocols

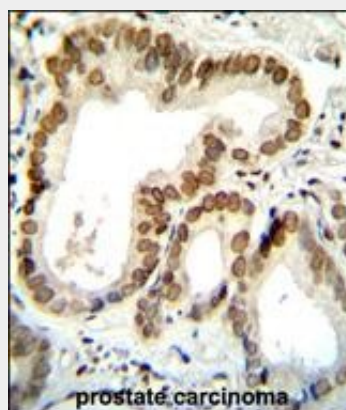
Provided below are standard protocols that you may find useful for product applications.

- [Western Blot](#)
- [Blocking Peptides](#)
- [Dot Blot](#)
- [Immunohistochemistry](#)
- [Immunofluorescence](#)
- [Immunoprecipitation](#)
- [Flow Cytometry](#)
- [Cell Culture](#)

### BTG2 Antibody (N-term) - Images



BTG2 Antibody (N-term) (Cat. #AP10121a) western blot analysis in K562 cell line lysates (35ug/lane). This demonstrates the BTG2 antibody detected the BTG2 protein (arrow).



BTG2 Antibody (N-term) (Cat. #AP10121a) immunohistochemistry analysis in formalin fixed and

paraffin embedded human prostate carcinoma followed by peroxidase conjugation of the secondary antibody and DAB staining. This data demonstrates the use of BTG2 Antibody (N-term) for immunohistochemistry. Clinical relevance has not been evaluated.

#### **BTG2 Antibody (N-term) - Background**

The protein encoded by this gene is a member of the BTG/Tob family. This family has structurally related proteins that appear to have antiproliferative properties. This encoded protein is involved in the regulation of the G1/S transition of the cell cycle.

#### **BTG2 Antibody (N-term) - References**

Zhang, L., et al. Mol. Biol. Rep. 37(6):2579-2586(2010)  
Mollerstrom, E., et al. BMC Cancer 10, 296 (2010) :  
Park, T.J., et al. Exp. Cell Res. 315(18):3152-3162(2009)  
Liu, M., et al. Cell Res. 19(7):828-837(2009)  
Farioli-Vecchioli, S., et al. PLoS ONE 4 (12), E8339 (2009) :

#### **BTG2 Antibody (N-term) - Citations**

- [Upregulation of B-cell translocation gene 2 by epigallocatechin-3-gallate via p38 and ERK signaling blocks cell proliferation in human oral squamous cell carcinoma cells.](#)